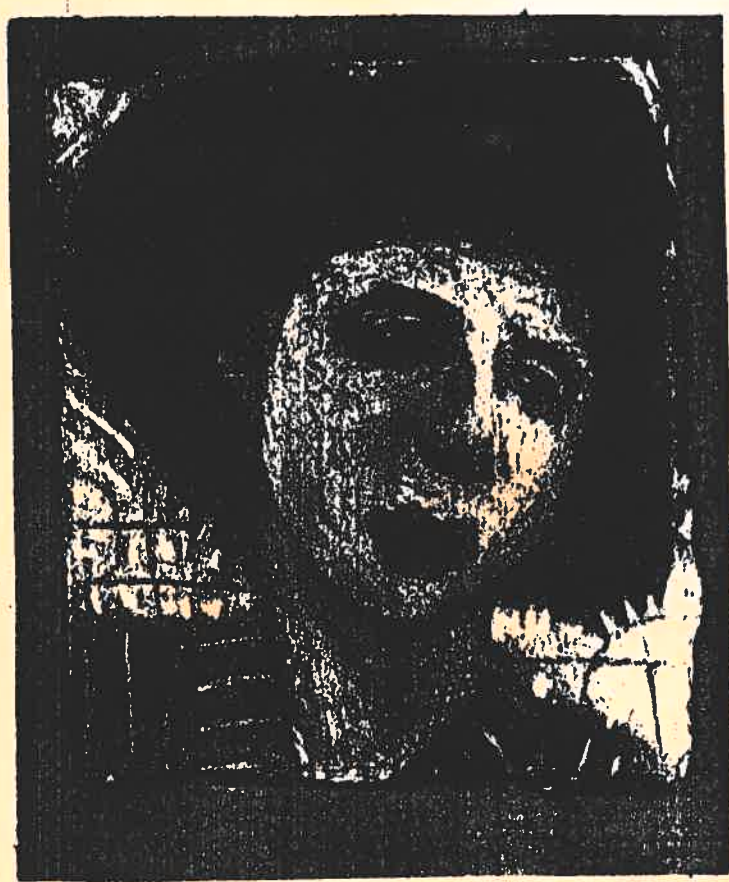




SMALL SOLD PIECES  
An Early Larson Retrospective  
CONTRIBUTORS

- Randy Alley
- Annyce Alvarez
- Debbie Baggett
- Diamond Bailey
- Christine Baukus
- Alan Bowling
- Addie Cianella
- Cara Dancy-Jones
- John Dancy-Jones
- Gerry Dawson
- Mildred Early
- Kurt Fortmeyer
- Melissa Griffin
- Cheryl Holmes
- Ann Hoover
- Lucy Inman
- David J. Kelly
- Karl Larson
- Lee Johnson
- Cheryl Smith Passarelli
- Ron Ridgeway
- SCREAM Magazine
- Clyde F. Smith
- SOUTHERN LIFESTYLE
- Diana Stuckey
- Henry Vermillion
- Walden Books
- Ferne Winborne



GOSSIP

**E DISCIPLE'S PROGRAM**

SMALL SOLD PIECES  
An Early Larson Retrospective  
Opening reception  
Sunday April 27th, 3-5 PM  
show runs thru May 31.

**DAVID EARLY LARSON**  
born 1955  
Raleigh, NC  
BFA 1982  
East Carolina  
Durham Arts Guild  
Show - 1984  
Nightingale's Show  
1985  
David has exhibited  
individual pieces  
in a wide range of  
juried shows in the  
area and won official  
recognition in many  
of them.

